

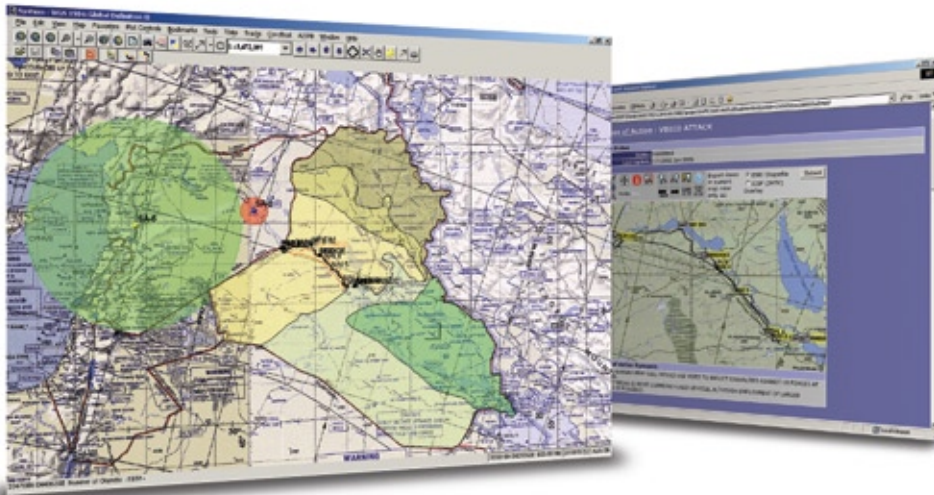
A2IPB

A2IPB products support mission planning, execution and help establish and prioritize ISR collection and production during readiness and combat operations. It enables a commander to visualize the full spectrum of adversary capabilities and COAs across all dimensions of the battlespace, knowing the adversary's move before he makes it.

Why Perform IPB?

The IPB process provides a structured means to gain, correlate, and exploit information at all levels of war, supporting decision makers from the strategic to tactical levels. IPB enhances the ability to conduct military operations in a dynamic environment where timely decisions are critical to the successful employment of power and aids implementation of Effects-Based Operations. IPB enables analysts to leverage information about the adversary's capabilities, potential centers of gravity, and possible COAs across all dimensions of the battlespace.

The effective application of IPB provides the means to reduce uncertainties concerning the adversary across all dimensions of the battlespace. It can help the friendly force commander to exploit or minimize environmental factors. Simply stated, IPB makes it possible to 'stay inside' the adversary's decision loop—to react faster and make better decisions than the opponent.



IPB supports Time Sensitive Targeting through predictive analysis, enabling the friendly force commander to "shoot the archer, not the arrows".

Advantages of A2IPB

- DoDIIS – Certified for fielding
- Employs combat-proven IPB methodology
- Provides tools for mining multiple data sources simultaneously and capable of ingesting large amounts of data
- Incorporates historical information, near real-time data, and predictive intelligence
- Shares information across geographic boundaries and supports distributed production
- Provides a detailed and accurate depiction of the battlespace in less time than manual methods
- Publish/Subscribe production concept provides tailored intelligence support to the warfighter

Contact

Business Development
Zel Technologies
54 Old Hampton Lane
Hampton, VA 23669

Phone: 757-722-5565
Fax: 757-325-1359
businessdev@zeltech.com
www.zeltech.com

The IPB Process

IPB consists of four basic steps that ensure the systematic analysis of the environment and adversary. The process is both continuous and cyclical in that IPB is conducted prior to and during a joint force’s operations as well as during planning for follow-on missions. The most current information available regarding the adversary situation and the battlespace environment continuously integrates into the IPB cycle. The game of chess provides an analogy useful in understanding the Joint IPB process as described below:

1. **Define the Battlespace Environment.** Identify the limits and important characteristics of the battlespace.
2. **Describe the Battlespace’s Effects.** Evaluate the effects of the battlespace environment on friendly and adversary operations.
3. **Evaluate the Adversary.** Identify and assess the adversary’s military and relevant civil centers of gravity, critical vulnerabilities, capabilities, limitations, and the doctrine and tactics, techniques, and procedures (TTP) employed by adversary forces.
4. **Determine Adversary Courses of Action.** Integrate results of previous steps to develop a prioritized list of potential adversary COAs, to include those most likely and most dangerous to friendly operations.



Advantages of A2IPB

- DoDIIS – Certified for fielding
- Employs combat-proven IPB methodology
- Provides tools for mining multiple data sources simultaneously and capable of ingesting large amounts of data
- Incorporates historical information, near real-time data, and predictive intelligence
- Shares information across geographic boundaries and supports distributed production
- Provides a detailed and accurate depiction of the battlespace in less time than manual methods
- Publish/Subscribe production concept provides tailored intelligence support to the warfighter

Contact

Business Development
Zel Technologies
54 Old Hampton Lane
Hampton, VA 23669

Phone: 757-722-5565
Fax: 757-325-1359
businessdev@zeltech.com
www.zeltech.com